

How to Read Your Meter

Utility and Resident Management Solutions

 **Minol**
All that counts.



Gas and Electric Meters

- Gas and electric consumption is calculated using a Meter reading.
- The Meter reading is collected from what is called the Meter Register.



9/27/2012



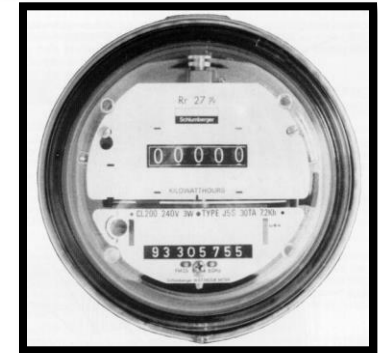
Odometer Style Registers

Gas and electric meters are very similar in how they are read and both can have similar registers:

Clock Dial: This style will have anywhere from 4-6 clock dials on the register face, with each dial rotating in the opposite direction of the one next to it.



Odometer: The easiest to read, this style looks very much like the odometer in your car. Physical rolling dials or a digital display show the current reading.





How to Read a Meter

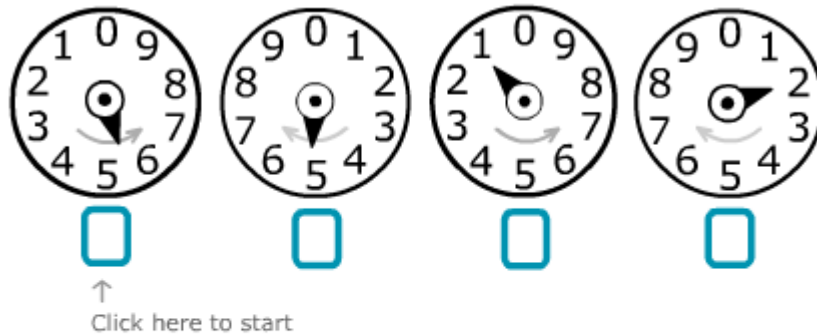
The easiest way to get the correct reading is to read the register from right to left. It is helpful to write it down as you go.

1. Write the numbers down in the same order that you read them, right to left.
2. When the pointer is between two numbers, you will write down the lower of the two numbers, except when it is between the 9 and 0. In this case you would write down the 9.
3. If the pointer is directly on a number, you need to look at the dial to the right to see if it has passed 0 or not. If it has, write down the number that the pointer is on. If not, you will write down the number lower than the one it is on.



Test Time!

<http://www.pnm.com/main/images/3mx.htm>



Read the meter above and enter what you believe to be the correct reading. Then select "Submit" to find out how you did.

SUBMIT

TRY ANOTHER